

# Journey to excellence

ASIA e University's (AeU) Doctor of Philosophy (PhD) programme in information and communications technology (ICT) provides the training required for students to independently conduct high-quality, original research and become the next generation of research-qualified professionals.

AeU offers research opportunities ranging from theoretical to innovative applications. The university welcomes local and international students either on a full-time or distance-learning basis.

## Learning perspective

PhD in ICT student Zaid Ali Sabeeh from Iraq shares his experience studying in AeU:

"My research is aimed at studying the sources of knowledge among physicians in the healthcare industry and part of this research effort is to provide a comprehensive review of literature on the nature, classification and characteristics of industrial knowledge management and innovations.

Prior to my PhD journey, I had the opportunity to apply my information technology (IT) knowledge and lingual skills in diverse sectors across several countries.

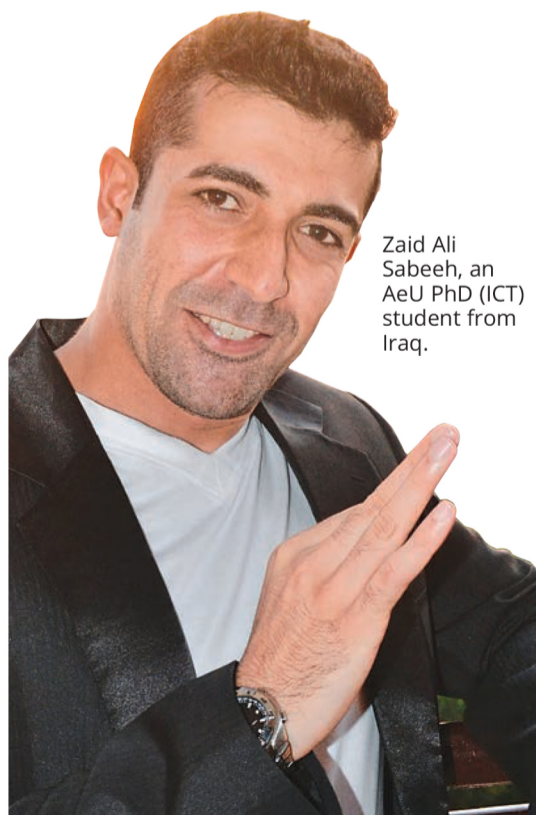
I lived in the United States after working in multinational organisations, providing services related to global news agencies, humanitarian aids and law enforcement.

The seven years of working and travel experience evoked my ambitions and excitement in learning new concepts and knowledge.

My curiosity fuelled my interest to study the multiracial cultures in South-East Asia. I chose to be a full-time student in Malaysia as it is a beautiful country with great tropical islands and food from different cultures.

I moved to Malaysia in 2010 and completed my master's degree in IT management at Staffordshire University's partner campus in Malaysia.

I decided to enrol in AeU because of the quality of research supervision, administration services and flexibility of the study mode.



Zaid Ali Sabeeh, an AeU PhD (ICT) student from Iraq.

**Most working adults prefer to pursue their education in part-time mode while working and AeU provides this option as it understands the demands of working adults.**

Conducting a three-year doctoral research can be a daunting task. The challenges can be overwhelming to deal with, especially with the increasing amount of new information, concepts and ideas relating to research topics.

Students need to maintain a healthy physical and mental lifestyle to deal with the stress of a lengthy study duration.

Most working adults prefer to pursue their education in part-time mode while working and AeU provides this option as it understands the demands of working adults.

Personally, I prefer the full-time mode as I can focus on my research to complete study requirements in a timely manner.

I passed my proposal defence two months ago and will start the collection of primary data for my research project, which I hope to complete within the stipulated time frame and budget.

I will resume my career in an occupation that allows me to utilise the work experience and newly acquired concepts obtained from my PhD."

■ For more information, call 1300 300 238.

## About AeU

AeU is a unique collaborative multinational university established under the auspices of the 34 Asia Cooperation Dialogue (ACD) countries.

All academic programmes are internationally benchmarked, approved by the Malaysian Higher Education Ministry and accredited by the Malaysian Qualifications Agency.

AeU has an enrolment of more than 22,000 students from 65 countries, more than 7,000 graduates as well as a diverse community of more than 1,000 fellow doctoral students from 46 countries who are making a difference around the world.

AeU has spread its wings to 17 non-ACD members such as Denmark, Hong Kong, Iraq, Kenya, Libya, Maldives, Mauritius, Namibia, New Zealand, Nigeria, Sweden, Somalia, Taiwan, the United Kingdom, Yemen, Zambia and Zimbabwe.

Registration for postgraduate (by research) programmes is open throughout the year. Apply online now at [www.aeu.edu.my](http://www.aeu.edu.my).